



## ***In-vitro* antidiabetic activities, chemical compositions, antioxidant activities, and toxicity of black tea polysaccharides as a potential source of dietary ingredients**

Ebru Pelvan<sup>a</sup>, Ayşe Karadağ<sup>b</sup>, Kubra Dogan<sup>b</sup>, Soner Aksu<sup>c</sup>, Arzu Tas<sup>c</sup>, Kubra Akalın<sup>d</sup>,  
Özlem Atlı Eklioğlu<sup>e</sup> and Cesarettin Alasalvar<sup>a\*</sup>

<sup>a</sup>TÜBİTAK Marmara Research Center, Food Institute, P.O Box 21, 41470 Gebze-Kocaeli, Turkey

<sup>b</sup>Department of Food Engineering, Yıldız Technical University, 34210 Esenler-Istanbul, Turkey

<sup>c</sup>TÜBİTAK Marmara Research Center, Genetic Engineering and Biotechnology Institute, P.O Box 21, 41470 Gebze-Kocaeli, Turkey

<sup>d</sup>Department of Molecular Biology and Genetics, Institute of Science and Technology, Gebze Technical University, 41400 Gebze-Kocaeli, Turkey

<sup>e</sup>Department of Pharmaceutical Toxicology, Faculty of Pharmacy, Anadolu University, 26470 Tepebaşı-Eskişehir, Turkey

\*Corresponding author: Cesarettin Alasalvar, TÜBİTAK Marmara Research Center, Food Institute, P.O Box 21, 41470 Gebze-Kocaeli, Turkey. E-mail: cesarettin.alasalvar@tubitak.gov.tr

DOI: 10.31665/JFB.2021.13263

Received: March 20, 2021; Revised received & accepted: March 31, 2021

Citation: Pelvan, E., Karadağ, A., Dogan, K., Aksu, S., Tas, A., Akalın, K., Eklioğlu, Ö.A., and Alasalvar, C. (2021). *In-vitro* antidiabetic activities, chemical compositions, antioxidant activities, and toxicity of black tea polysaccharides as a potential source of dietary ingredients. J. Food Bioact. 13: 93–101.

### Abstract

Type 2 diabetes (T2D) is one of the fast growing diet-related chronic diseases throughout the world. Tea contains several bioactive compounds, some of which render health benefits. Black tea polysaccharides (BTPS), extracted from low grade quality tea leaves, after processing, were examined for their *in-vitro* antidiabetic activities ( $\alpha$ -glucosidase inhibitory and glucose uptake activities), chemical compositions (yield, monosaccharides, amino acids, and minerals), and antioxidant activities as well as toxicity (cytotoxicity and genotoxicity). In addition, 50% lethal dose (LD<sub>50</sub>) for BTPS was determined using an acute toxicity test to assess the safe use of it as a dietary ingredient. BTPS had strong  $\alpha$ -glucosidase inhibitory activity with IC<sub>50</sub> value of 3.4  $\mu$ g/mL. This was much lower than that of the positive control, pharmaceutical glucosidase inhibitor acarbose with IC<sub>50</sub> of 687.5  $\mu$ g/mL. BTPS also increased glucose uptake into the adipocyte differentiated 3T3-L1 MBX cells. Neither cytotoxic nor mutagenic effects were found for BTPS. The LD<sub>50</sub> of BTPS for acute toxicity demonstrated that it was safe to use. The present work suggests that BTPS can be used as an antidiabetic dietary ingredient without posing any potential health risk.

**Keywords:** Black tea polysaccharides; Antidiabetic activity;  $\alpha$ -Glucosidase inhibitory activity; Glucose uptake activity; Toxicity.

### 1. Introduction

Diabetes mellitus has become one of the biggest global public health challenges in the 21<sup>st</sup> century with type 2 diabetes (T2D) being the most common form, accounting for 90–95% of all cases (Wang et al., 2016). In the early therapy for diabetes, one approach

to decrease postprandial hyperglycemia is to retard absorption of glucose through inhibition of carbohydrate hydrolyzing enzymes (such as  $\alpha$ -amylase and  $\alpha$ -glucosidase) in the digestive tract (Chen et al., 2009). Due to the serious adverse effects associated with the oral synthetic hypoglycemic agents, exploration of novel, safe, and effective bioactive compounds with antidiabetic activity has

become an important research area (Shori, 2015; Wang and Zhu, 2016).

A large number of studies have shown that soluble tea polysaccharides are the main hypoglycemic factor in tea (Fan et al., 2018; Akalin et al., 2019). It has been reported that glucose levels in the blood is reduced by black tea (Akalin et al., 2019) and green tea extracts (Tsuneki et al., 2004; Zhou et al., 2007). It is also believed that tea reduces dietary glucose intake by suppressing the activity of glucose transporters in the intestinal epithelium (Ramadan et al., 2009).

Compared to green tea, the enzymatic oxidation in black tea process changes its chemical composition in terms of polyphenols, soluble sugars, amino acids, organic acids, colourings, and volatile constituents, among others. Although there are a considerable number of studies on antidiabetic effects of green tea polysaccharides (GTPS) (Zhou et al., 2007; Cao, 2013; Cai et al., 2013; Wang et al., 2016; Karadag et al., 2018), studies on antidiabetic effects of black tea polysaccharides (BTPS) are scarce (Chen et al., 2009). Thus, the aim of the study was to assess the *in-vitro* antidiabetic activities, chemical compositions, antioxidant activities, and toxicity of BTPS as a potential source of dietary ingredients.

## 2. Materials and methods

### 2.1. Samples and reagents

Black tea samples (low quality-grade 6) were procured from ÇAYKUR (State-Owned Tea Enterprise, Rize, Turkey). All chemical reagents were obtained from Sigma-Aldrich Co. Ltd. (Dorset, UK), unless otherwise stated.

### 2.2. Extraction of BTPS and determination of yield

The BTPS was extracted from black tea as described by Karadag et al. (2018), with slight modifications. Briefly, black tea was mixed with ethanol (1:5; w/v) and left overnight. After filtration, tea leaves were air-dried and submitted to hot-water extraction with a horizontal extractor (Niro Atomizer, AC-27, Soeborg, Denmark). The extract was then centrifuged at  $5,870 \times g$  (Westfalia D-4740, Wesseling, Rheinland, Germany). The supernatant was subsequently mixed with four volumes of ethanol and kept at 4 °C overnight. Finally, the precipitates were obtained by centrifugation (Hettich, Rotina 420, Tuttlingen, Germany) at  $15,000 \times g$  for 20 min at chill temperature (4 °C), and the pellet was washed with acetone and ethanol. The percentage yield of BTPS was calculated as follows:

$$\text{Yield (\%)} = 100 \times (W_{\text{BTPS}}/W_{\text{tea}})$$

where  $W_{\text{BTPS}}$  is the weight of BTPS and  $W_{\text{tea}}$  is the weight of black tea leaves.

### 2.3. Characterization of BTPS

#### 2.3.1. Chemical compositions

Total polysaccharides (DuBois et al., 1956), uronic acid (Blumenkrantz and Asboe-Hansen, 1973), total phenolics (Horszwald and Andlauer, 2011), soluble and insoluble dietary fiber (AOAC, 1994), amino acids (Gheshlaghi et al., 2008), monosaccharides (Dai et al., 2010), mineral compositions (AOAC, 1999), and molecular weight (Mw) distribution (Cai et al., 2013) of BTPS were

analysed accordingly. Values were expressed as mean  $\pm$  standard deviation ( $n = 3$ ).

#### 2.3.2. Antioxidant activity

Antioxidant activities of BTPS were determined according to a previous publication (Karadag et al., 2018). Two test methods, 2,2'-azino-bis (3-ethylbenzothiazoline-6-sulphonic acid) (ABTS) radical cation activity and ferric reducing antioxidant potential (FRAP), were used to assess the antioxidant activities (Cheng et al., 2013). Each sample was dissolved in water and the results were expressed as milligrams of Trolox equivalents (TE) per 100 g of BTPS for ABTS assay and mg of  $\text{FeSO}_4 \cdot 7\text{H}_2\text{O}$  equivalents per 100 g of BTPS for FRAP assay.

#### 2.3.3. Spectroscopic analyses

Ultraviolet-visible (UV) spectra of BTPS was recorded with a spectrophotometer (Jasco V-650, Tokyo, Japan). Fourier transform infrared (FT-IR) spectra of BTPS was recorded with FT-IR spectrophotometer (Perkin Elmer Spectrum 400, Waltham, MA, USA). The finely powdered sample was pressed into the sample holder for FT-IR measurement in the frequency range of  $4,000\text{--}650 \text{ cm}^{-1}$ .

### 2.4. Inhibition of $\alpha$ -glucosidase activity of BTPS

The effects of BTPS on  $\alpha$ -glucosidase activity were determined according to the method given by Wei et al. (2010) with  $\alpha$ -glucosidase from *Saccharomyces cerevisiae* (Sigma G5003, Sigma-Aldrich Co. Ltd., Dorset, UK). Acarbose (Sigma PHR1253) was used as a positive control. The  $\alpha$ -glucosidase activity was determined by measuring the yellow-coloured nitrophenol released from *p*-nitrophenyl  $\alpha$ -D-glucoside (pNPG) at 405 nm, and inhibitory activity was expressed as the percentage of the control sample (acarbose). Percentage inhibition was calculated as follows:

$$\text{Inhibition (\%)} = [(\text{Abs}_{\text{control}} - \text{Abs}_{\text{sample}}) / \text{Abs}_{\text{control}}] \times 100$$

where  $\text{Abs}_{\text{control}}$  was the absorbance of the control, and  $\text{Abs}_{\text{sample}}$  denotes the absorbance of the sample.

### 2.5. Glucose uptake of BTPS

Adipocyte differentiation was induced by treated 3T3-L1 MBX (ATCC® CRL-3242™) cells with 100  $\mu\text{L}$  of differentiation cocktail per well containing 0.25  $\mu\text{M}$  dexamethasone, 0.5 mM IBMX, 1  $\mu\text{g}/\text{mL}$  insulin, and 2  $\mu\text{M}$  rosiglitazone with 10% fetal calf serum and Dulbecco's Modified Eagle's Medium. Adipocyte cells were exposed with BTPS at 0.5 and 1 mg/mL doses of serum-free medium for 20 min. The glucose uptake test was carried out according to the Glucose Uptake Colorimetric Assay Kit (Sigma MAK083) protocol. A 100  $\mu\text{L}$  of insulin solution with 1  $\mu\text{g}/\text{mL}$  final concentration was used as a positive control. As a negative control, differentiated cells were stimulated with phosphate buffered saline in the absence of insulin. Glucose uptake levels were expressed as 2-deoxyglucose (2-DG, pmol/well).

### 2.6. Cytotoxicity of BTPS

NIH/3T3 mouse embryonic fibroblast (ATCC® CRL-1658™)

cell line was used to investigate the cytotoxicity of BTPS against healthy cell lines. Briefly, NIH/3T3 cells were incubated according to the instructions of the supplier at 37 °C (at least 95% humidified atmosphere with 5% CO<sub>2</sub>). NIH/3T3 cells were seeded at 1 × 10<sup>4</sup> cells into each well of 96-well plates. After 24 h of incubation, the metabolites were added to the wells at 9 different concentrations range between 0.019 and 5 mg/mL with a dilution factor of 2 (0.019, 0.039, 0.078, 0.156, 0.313, 0.625, 1.25, 2.5, 5.0 mg/mL) in quadruplicates. The 2,3-bis-(2-methoxy-4-nitro-5-sulphophenyl)-2H-tetrazolium-5-carboxanilide (XTT) assay (Xenometrix AG, Gewerberstrasse, Switzerland) was performed according to the manufacturer's instructions, after 24 h incubation with the metabolites. The absorbance was determined after 2 h incubation at 480 nm with a reference wavelength of 680 nm using a microplate reader (BioTek, Winooski, VT, USA). Cell viability inhibition percentage was calculated for each concentration of BTPS according to the formula given below; obtained from the instructions of the supplier and IC<sub>50</sub> (concentration that induced 50% enzyme inhibition) values were estimated by plotting a dose response curve of the inhibition % *versus* the concentration of test compound.

$$\text{Inhibition (\%)} = 100 - \left[ \frac{\text{corrected mean OD sample}}{\text{corrected mean OD solvent controls}} \times 100 \right]$$

where OD is optical density.

The stock solutions of the metabolites were prepared in distilled water and further dilutions were made with fresh culture medium. All data were obtained from three independent experiments in quadruplicates.

### 2.7. AMES microplate format test of BTPS

AMES assay was performed to determine the mutagenicity of BTPS using AMES microplate format test 98/100 mutagenicity assay sample kit (Xenometrix AG), as described earlier (Altıntop et al., 2012, 2016). *Salmonella typhimurium* strains (TA98 and TA100) were used to mimic frameshift mutations and base-pair substitutions, respectively. First, the bacterial cultures were grown in an incubated shaker (SI-600, Jeio Tech, Daejeon, Korea) overnight. The concentrations of the compound were selected according to the previous guidelines. The concentrations were 5.0, 2.5, 1.25, 0.625, 0.3125, 0.156 mg/mL in dimethyl sulfoxide (DMSO) (Chandrasekaran et al., 2011). The mutagenicity of the compounds were then determined with/without metabolic activation which was provided by Aroclor™-1254 induced male Sprague-Dawley rat liver microsomal enzyme (S9) mix (Xenometrix AG) with a final concentration of 4.5% (v/v). After that, 2-nitrofluorene (2-NF; 2 µg/mL) and 4-nitroquinoline *N*-oxide (4-NOQ; 0.1 µg/mL) were used as positive controls in the assays without of S9 mix. 2-Aminoanthracene (2-AA) was used as a positive control with S9 mix against TA 98 and TA100 (1 and 2.5 µg/mL, respectively). Solvent control was prepared as 4% DMSO. Finally, the number of positive wells in triplicates were counted and compared with the negative control. Fold induction over the negative control, fold induction over the baseline, and zero dose baseline were calculated as described earlier (Chandrasekaran et al., 2011; Altıntop et al., 2012; Flückiger-Isler and Kamber, 2012; Altıntop et al., 2016). All doses were tested according to Student's *t*-test at *p* < 0.05. Mutagenity was determined according to the previous criteria (Flückiger-Isler and Kamber, 2012), which were as follows: if baseline was ≤ 3.0, then 2.0 and 3.0-fold increases: weak positive, ≥ 3.0-fold increases: positive; if baseline was > 3.0, 1.5 and 2.5-fold increases: weak positive, ≥ 2.5-fold increases: positive.

**Table 1. Yield and compositional parameters of BTPS**

Parameters	
Yield (%)	3.26 ± 0.11
Total carbohydrates (%)	51.8 ± 4.8
Uronic acid (%)	4.35 ± 0.58
Insoluble dietary fibre (%)	1.21 ± 0.11
Soluble dietary fibre (%)	30.2 ± 0.1
Total phenolics (g GAE/100 g BTPS)	10.9 ± 1.3
ABTS (mg TE/100 g BTPS)	8.77 ± 0.67
FRAP (mg FeSO <sub>4</sub> ·7H <sub>2</sub> O/100 g BTPS)	3.01 ± 0.29

Data are expressed as the mean ± SD (*n* = 3). Abbreviations: ABTS, 2,2'-azino-bis(3-ethylbenzothiazoline-6-sulphonic acid); FRAP, ferric reducing antioxidant potential; GAE, gallic acid equivalents; BTPS, black tea polysaccharide, TE, trolox equivalents.

A mutagenic compound should show significant increases at least in two adjacent doses or a significant increase at the highest concentration (5 mg/mL). Compounds which did not have any of above properties were classified as negative.

### 2.8. Lethal dose 50 (LD<sub>50</sub>) of BTPS

The LD<sub>50</sub> assay of BTPS was performed according to the "OECD 423-Acute Oral Toxicity (acute toxicity classification method)" standard test protocol. The LD<sub>50</sub> value of BTPS was determined by applying the limit test protocol as described by Karadag et al. (2018).

### 2.9. Statistical analysis

Each determination was replicated three times. The value was expressed as the mean ± standard deviation. Differences were estimated by analysis of variance (ANOVA) followed by Tukey's multiple comparison tests. Differences were considered to be significant at *p* ≤ 0.05. All statistical analysis were performed using the SPSS 20.0 version (SPSS Inc., Chicago, IL, USA)

## 3. Results and discussion

### 3.1. Yield, chemical compositions, and antioxidant activities of BTPS

The yield of BTPS was 3.26% (w/w), which was similar to those previously found for different teas (Sun et al., 2013; Karadag et al., 2018). The contents of carbohydrate, uronic acid, total fiber, and total phenolics of BTPS are given in Table 1.

The relative mole percentages of monosaccharides, amino acids, and mineral compositions of BTPS are given in Table 2. The monosaccharide compositions of BTPS were mainly composed of galactose, arabinose, and glucose with the presence of some glucuronic and galacturonic acids. The latter two were acidic heteropolysaccharide. These results are similar to those in previous studies, showing that tea polysaccharides have arabinogalactan structures (Chen et al., 2009; Scoparo et al., 2016; Karadag et al., 2019).

BTPS was a protein-bounded polysaccharide and the major pro-

**Table 2.** Monosaccharide, amino acid, and mineral compositions of BTPS

Monosaccharides	mol ratio (%)	Amino acids	mg/100 g	Minerals	mg/100 g
D-mannose	2.38 ± 0.02	Aspartic acid	446 ± 86	Calcium	41.2 ± 1.7
D-ribose	2.72 ± 0.02	Alanine	114 ± 11	Chromium	0.78 ± 0.0
L-rhamnose	2.86 ± 0.03	Arginine	89.5 ± 12	Copper	1.37 ± 0.0
D-glucuronic	2.46 ± 1.01	Glutamic acid	822 ± 11	Iron	9.8 ± 0.2
D-galacturonic	2.89 ± 1.02	Glycine	337 ± 60	Magnesium	815 ± 27
D-glucose	7.00 ± 0.07	Histidine	9.50 ± 7.80	Manganese	423 ± 4
D-galactose	47.5 ± 0.5	Isoleucine	nd	Phosphorus	1,970 ± 50
D-xylose	1.89 ± 0.02	Leucine	54.5 ± 3.5	Potassium	9,155 ± 47
D-arabinose	28.5 ± 0.3	Lysine	182 ± 12	Sodium	15.3 ± 0.8
L-fucose	1.45 ± 0.08	Methionine	nd	Zinc	6.22 ± 0.20
		Proline	85.0 ± 9.9		
		Phenylalanine	20.0 ± 4.2		
		Serine	144 ± 12		
		Threonine	67.0 ± 0.0		
		Tyrosine	40.0 ± 14.1		
		Valine	37.5 ± 3.5		
		Total	2,498 ± 1		

Data are expressed as the mean ± SD ( $n = 3$ ). Abbreviation: nd, not detected.

portions of amino acids composition consisting of glutamic acid, aspartic acid, and glycine, with a total content of 2,498 mg/100 g. The amino acid compositions of black and green tea polysaccharides were similar to those reported by Scoparo et al. (2016) and consisted mainly of glycine, glutamic acid, and aspartic acid (Chen et al., 2005).

Among the studied minerals, BTPS was rich in potassium, phosphorus, magnesium, and manganese. The mineral composition of tea may also be affected by variety, geographical origin, harvest time and year as well as climate and composition of the soil (Street et al., 2007).

The radical scavenging ability and reducing potentials of BTPS were determined by both ABTS and FRAP assays, respectively (Table 1). Wang et al. (2013a) revealed that tea polyphenols are the major antioxidant in the crude tea polysaccharide extract. The beneficial effect of antioxidants has been reported in animal models of diabetes and in diabetic patients (Rizvi et al., 2005; Babu et al., 2006; Bhattacharya et al., 2013). The plasma antioxidant potential showed a significant decrease (73%) in diabetic rats. Black tea extract supplementation, rich in polyphenols, was effective in ameliorating diabetes associated with oxidative stress parameters (Kumar and Rizvi, 2015). Therefore, the presence of polyphenol in BTPS would contribute to its potential use as an antidiabetic ingredient.

### 3.2. Molecular weight distributions and spectroscopic analyses of BTPS

The Mw distributions and the peak pattern of BTPS are illustrated in Figure 1a. Mw (weight-average molecular weight) value was calculated by the regression equation  $[\log(Mw) = -0.081x^3 + 2.215x^2 - 20.965x + 72.956; R^2 = 0.998]$  obtained by dextran

standards and retention time]. BTPS contained three peaks and predominant peak (94.15%) was eluted at 10.27 min with a Mw of  $1.864 \times 10^3$  Da and its polydispersity was 1.23. The minor fractions eluted at a retention time of 9.84 (0.80%) and 10.87 (5.06%) had Mw of  $14.27 \times 10^3$  and 174 Da, respectively. This was lower than the value of 3.8–37.2 kDa found previously, and it also indicated that the Mw of BTPS was lower than oolong and green tea polysaccharides (Chen et al., 2009). The changes in the Mw of tea polysaccharides were observed with different degrees of fermentation by Wang et al. (2012). Therefore, the lower Mw determined in the present study may not only be related to the origin of tea leaves, but also fermentation conditions of Turkish black tea.

The UV spectrum of the BTPS is shown in Figure 1b. BTPS clearly emerged with a stronger absorption peak at 200–250 nm, which indicates that the samples might contain an unsaturated carbonyl, carboxyl group related the polysaccharide structure. The shoulder-shape absorption peak was observed in the 260–280 nm region, with the inflection at 270 nm which is mostly related to the presence of protein portion (Wang et al., 2013b).

The FT-IR spectroscopy (Figure 1c) can be used for approximate identification of polysaccharides and proteins when combined with chemical analyses. Peaks at 1,000–1,200, 2,800–3,200, and 3,200–3,600  $\text{cm}^{-1}$  were characteristics for polysaccharides, the broadly intense peak at 3,250  $\text{cm}^{-1}$  represents the stretching vibrations of O-H, while the weak band at 2,920  $\text{cm}^{-1}$  is attributed to stretching of asymmetric  $\text{CH}_2$ . The presence of protein component was demonstrated by the occurrence of two bands of decreasing intensity: amide I towards 1,611  $\text{cm}^{-1}$  and amide II towards 1,516  $\text{cm}^{-1}$  with N-H and C-N links. The peaks between 1,400 and 1,300  $\text{cm}^{-1}$  were the characteristic of C-O stretching and C-H or OH bending, and the peak of 1,390  $\text{cm}^{-1}$  might be attributed to the stretching of OH of phenolics in the structure. The broadband at

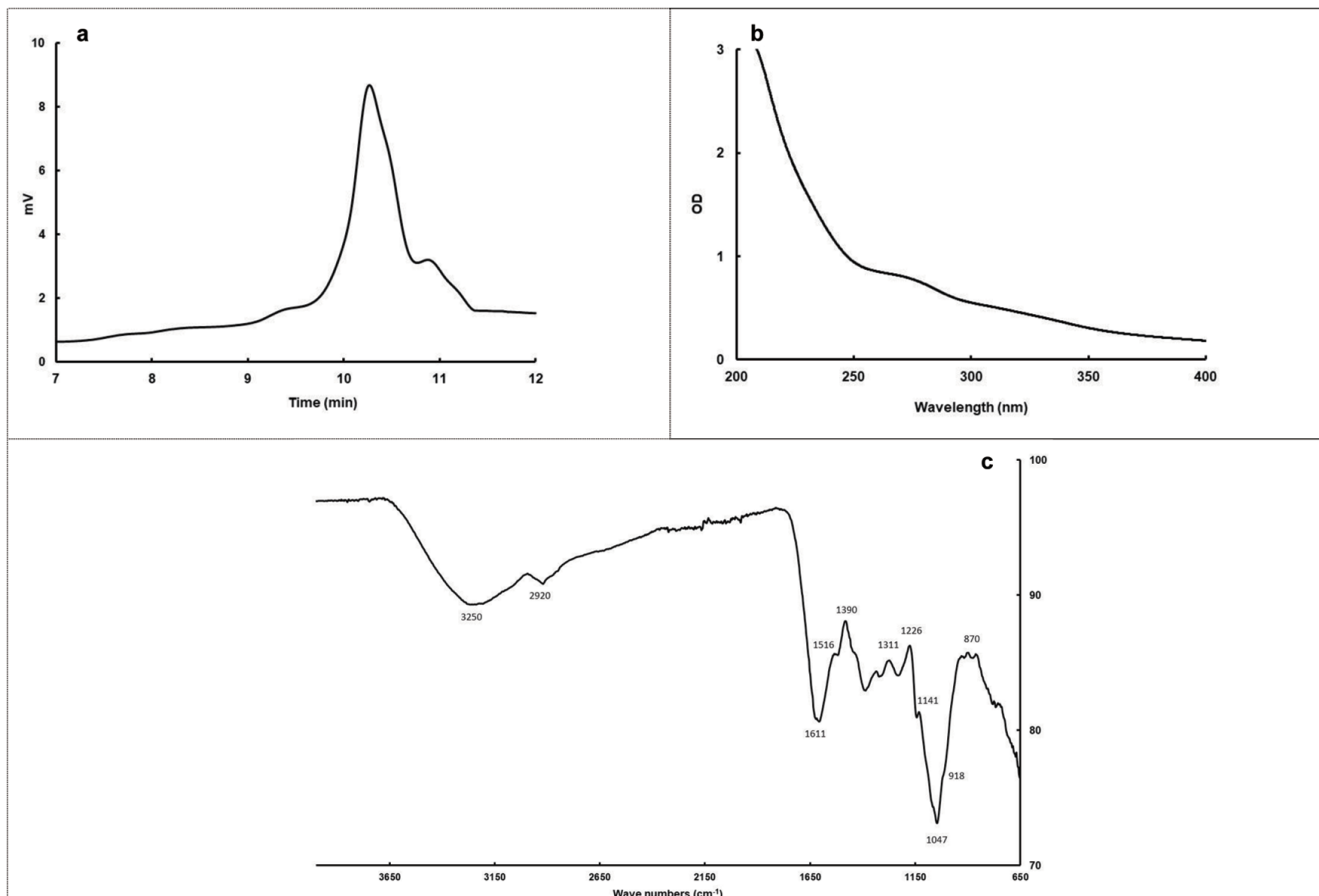


Figure 1. Gel permeation chromatogram (a), UV Spectra (b), and FT-IR spectra (c) of BTPS.

$1,047\text{ cm}^{-1}$  suggests the presence of C-O-H side groups and C-O-C glycosidic band vibration and should be due to the characteristic absorption bands of pyran glycosides. The peaks around  $920$  and  $880\text{ cm}^{-1}$  corresponds to skeletal modes of pyranose rings, which is characteristic of  $\beta$ -glycosidic type linkages between the sugar units (Chen et al., 2009; Zhao et al., 2014).

### 3.3. Inhibitory effects of BTPS on $\alpha$ -glucosidase activity

The  $\alpha$ -glucosidase inhibitors are currently of interest owing to their promising therapeutic potential for treatment diabetes as oral hypoglycaemic agents. The  $\alpha$ -glucosidase inhibitors act on the brush border of intestinal mucosa to inhibit the post-meal blood glucose increase and to decrease fasting blood glucose to some extent by inhibiting the hydrolysis of oligosaccharides and disaccharides to monosaccharide and their intestinal absorption (Wei et al., 2010). Acarbose is an  $\alpha$ -glucosidase inhibitor used for treatment of T2D, but it is also responsible for many side effects such as abdominal distention, flatulence, diarrhea, and meteorism. Therefore, many efforts have been made to identify novel, safe and effective polysaccharides with antidiabetic activity.

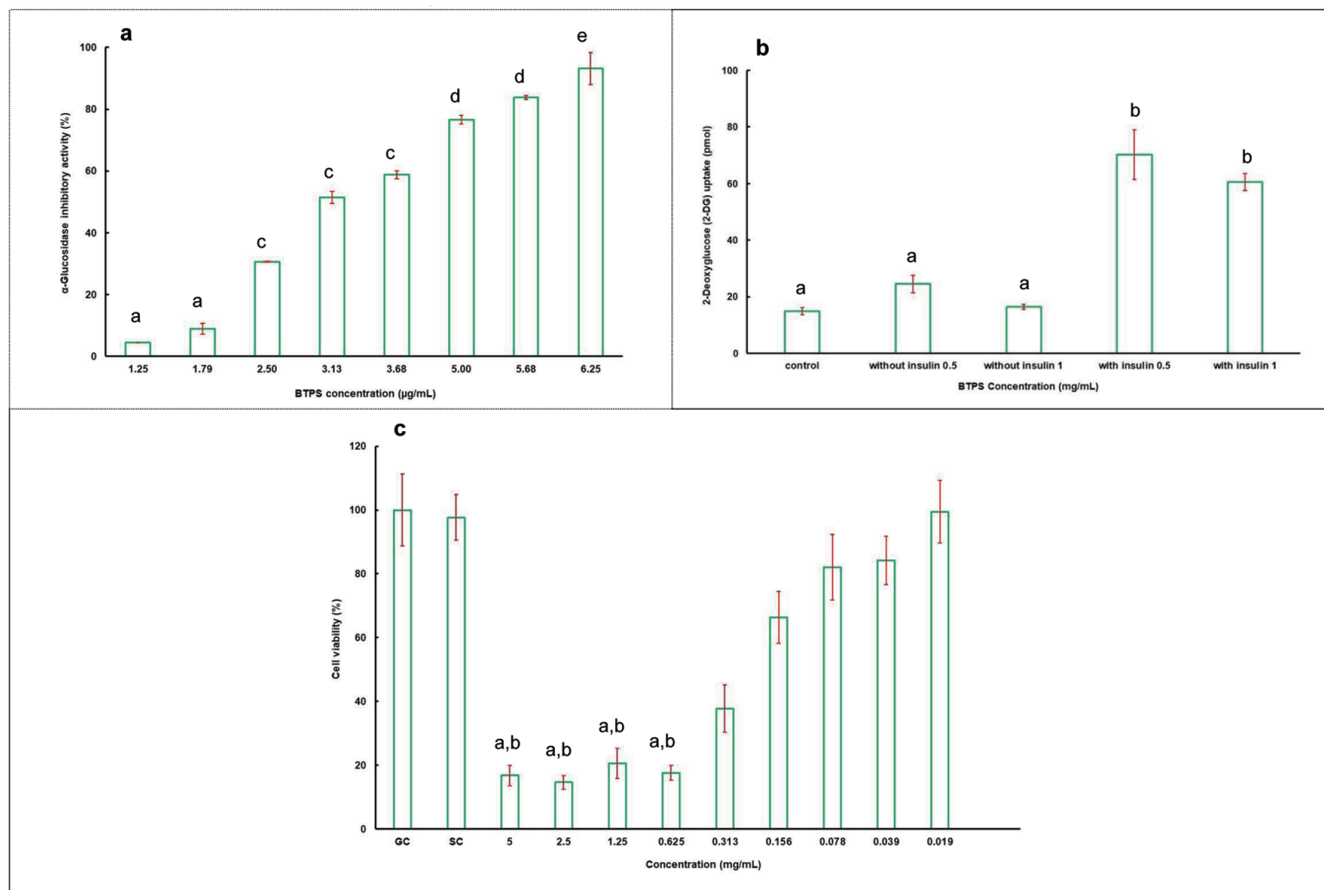
As shown in Figure 2a, BTPS obtained from black tea, had a dose-dependent effect on  $\alpha$ -glucosidase inhibitory activity, and inhibition varied from 4.35 to 93.17% with a concentration increase from 1.25 to 6.25  $\mu\text{g/mL}$ .  $\text{IC}_{50}$  value of BTPS was found to be 3.40  $\mu\text{g/mL}$ . As a positive control, the  $\text{IC}_{50}$  of acarbose was 1.06 mM

(687.5  $\mu\text{g/mL}$ ). BTPS obtained in the present study showed a higher  $\alpha$ -glucosidase inhibitory activity compared to that of a study by Chen et al. (2009), where BTPS showed 91 and 14.3% inhibition at a concentration of 200 and 25  $\mu\text{g/mL}$ , respectively. These differences may be due to the facts that the coarse tea, its processing conditions, and the preparation and extraction methods of samples are different. It was revealed that  $\alpha$ -glucosidase inhibitory activity of tea polysaccharides depends on fermentation time. Wang et al. (2012) found that  $\text{IC}_{50}$  value was 20  $\mu\text{g/mL}$  for heavily fermented oolong teas, whereas it was  $>500\text{ }\mu\text{g/mL}$  for lightly fermented teas.

### 3.4. Glucose uptake activity of BTPS

Insulin signals the uptake of glucose from blood to produce energy in liver, fat, muscle, and other body cells (Du et al., 2012). This ensures that the glucose level in the blood remains at a normal level. In T2D, this balance is disturbed and a high glucose level is observed in the blood because of the impaired insulin action (Del Prato et al., 2002). Therefore, the results of glucose uptake studies provide an important information in terms of effectiveness of the remedy.

In the present study, *in-vitro* antidiabetic activity of BTPS was also evaluated using 2-DG uptakes in 3T3-L1 adipocytes. Compared to the control group, 3T3-L1 MBX cells treated with BTPS at two different concentrations (0.5 and 1 mg/mL) increased glucose uptake into the cells (Figure 2b), and no significant differ-



**Figure 2.** The  $\alpha$ -glucosidase inhibitory activity of BTPS (a), 2-deoxyglucose (2-DG) uptake in adipocytes in the absence (0 nM) and in the presence (1  $\mu$ g/mL) of insulin at indicated concentrations of BTPS extract (0.5 and 1 mg/mL) (b), and percentage viability of BTPS (c). Abbreviations: GC, growth control; SC, solvent control. Data are expressed as the mean  $\pm$  SD ( $n = 3$ ). Means  $\pm$  SD followed by different letters are significantly different ( $p < 0.05$ ) for Figures 2a and b. For Figure 2c, <sup>a</sup> significant difference from GC ( $p < 0.001$ ) and <sup>b</sup> significant difference from SC ( $p < 0.001$ ).

ences ( $p > 0.05$ ) were observed in glucose uptake values with change in the concentration of BTPS. Our results suggest that BTPS may possess insulin-mimetic properties. Insulin stimulation of glucose uptake by adipose tissue is critical in lowering postprandial blood glucose level. Abnormal regulation of this process is one of the significant factors in the development of T2D. The inhibition effect of epigallocatechin-3-*O*-gallate (EGCG) was shown on the dexamethasone-induced insulin resistance. Additionally, EGCG improves insulin-stimulated glucose uptake in rat L6 cells. This effects were associated with the glucose transporter type 4 (GLUT-4) membrane protein (Zhang et al., 2010). The expression of genes related to glucose uptake and insulin-signalling pathway can be regulated by green tea polyphenol extract in rats fed with a fructose-rich diet (Cao et al., 2007). In this study, dose dependent gene expression differences were reported in several genes classified in glucose transporter family and insulin signalling pathway. These reported findings are in good agreement with our results.

### 3.5. Cytotoxicity of BTPS

The tea extracts which might be used for food additives or a treatment agent should be evaluated in terms of their toxicological as-

pects. Therefore, the cytotoxicity of BTPS was investigated using the NIH/3T3 mouse embryonic fibroblast cells. The  $IC_{50}$  values of BTPS was 0.615 mg/mL (Figure 2c). According to the results of XTT assay, the tested compounds were found to be non-cytotoxic at their active concentrations, hence demonstrating their therapeutic value.

It is an expected that tea polysaccharides do not show cytotoxic effects. Chen et al. (2018) investigated the cytotoxicity of Fuzhuan brick tea polysaccharides (FBTPs) at concentrations ranging from 25 to 400  $\mu$ g/mL in human hepatic epithelial (L-02) cells. They found that cell viability remained between 80 and 120% and suggested that none of FBTPs exhibited cytotoxic effect (Chen et al., 2018). Indeed, biosafety of polysaccharides from natural resources has confirmed in several studies (Nie and Xie, 2011).

### 3.6. AMES microplate format test of BTPS

According to the results, *Salmonella typhimurium* strains, TA98 and TA100, showed more than 25 positive wells against the positive controls known as, 2-AA (with S9), 4-NOQ and 2-NF (without S9). The negative control wells were found to be less than 8 against TA98 and TA100 with and without S9. Therefore, our tests reached the validity criteria based on the instructions of the

Table 3. The result of AMES microplate format genotoxicity test of BTPS

Concentrations (mg/mL)	Mutagenicity													
	Baseline		TA 98 (positive wells)				TA 98 (Fold increase over baseline)		Baseline		TA 100 (positive wells)		TA 100 (Fold increase over baseline)	
	S9+	S9-	S9+	S9-	S9+	S9-	S9+	S9-	S9+	S9-	S9+	S9-		
0.156	3.82	4.18	2.00 ± 1.00	3.00 ± 1.73	0.52	0.72	5.55	4.89	6.33 ± 0.58	3.33 ± 1.15	1.14*	0.68		
0.313			2.00 ± 2.00	3.00 ± 1.00	0.52	0.72			7.33 ± 0.58	6.67 ± 2.08	1.32***	1.36*		
0.625			2.00 ± 1.00	3.33 ± 1.53	0.52	0.80			7.67 ± 0.58	7.00 ± 1.00	1.38***	1.43***		
1.250			1.33 ± 0.58	1.00 ± 0.00	0.35*	0.24***			5.33 ± 3.06	3.67 ± 1.15	0.96	0.75		
2.500			0.33 ± 0.58	2.00 ± 1.00	0.09***	0.48***			4.00 ± 2.00	2.33 ± 1.53	0.72	0.48*		
5.000			1.00 ± 1.73	1.33 ± 0.58	0.26*	0.32***			6.67 ± 1.53	7.00 ± 1.00	1.20*	1.43***		

Data are expressed as the mean ± SD (n = 3). \*p < 0.05, significant level according to the student-t test. \*\*\*p < 0.001, significant level according to the student-t test.

manufacturer. BTPS showed a baseline of 3.82 and 4.18 against TA98 with and without S9, respectively (Table 3). The number of revertants did not reach 1.5–2.5-fold over the baseline so the compound was accepted as non-genotoxic. The same compound showed a baseline of 5.55 and 4.89 against TA100 with and without S9, respectively. Any of the doses tested did not reach 1.5–2.5 fold increases (Figure 3). Therefore, BTPS was accepted as non-genotoxic against TA100 with and without metabolic activation. This compound, which has biological activities, should undergo further investigations as a therapeutic ingredient due to its non-genotoxic potential.

In contrast to genotoxicity, anti-genotoxic effects of polysaccharides was reported by plasmid DNA strand break assay. The inhibition of supercoiled plasmid DNA strand breakage was used to investigate the DNA protective properties of crude polysaccharides extracted from *Schinus terebinthifolius* (PSTF) and *Schinus molle* (PSMF) fruits. The results of this study showed that PSTF and PSMF at 25 and 50 µg/mL concentrations significantly reduced

the percentage of DNA damage (Feriani et al., 2020). These results indicate that the tested polysaccharides may have anti-genotoxic effect.

### 3.7. The lethal dose 50 (LD<sub>50</sub>)

According to the limit test protocol, BTPS was administrated to mice by gavage 5.000 mg/kg dose level. For the following 5 days, BTPS administered animals were monitored for mortality and clinical signs. None of the BTPS administered mice died during the trial and abnormal clinical findings were not observed during the entire experiment. At the end of the experiment, gross pathology and histopathological examination was showed no abnormality in the test and control animals. According to these results and the survival of all tested mice, BTPS was categorized as “GHS 5 or unclassified” according to the OECD 423-Acute Oral Toxicity (acute toxicity classification method) test method.

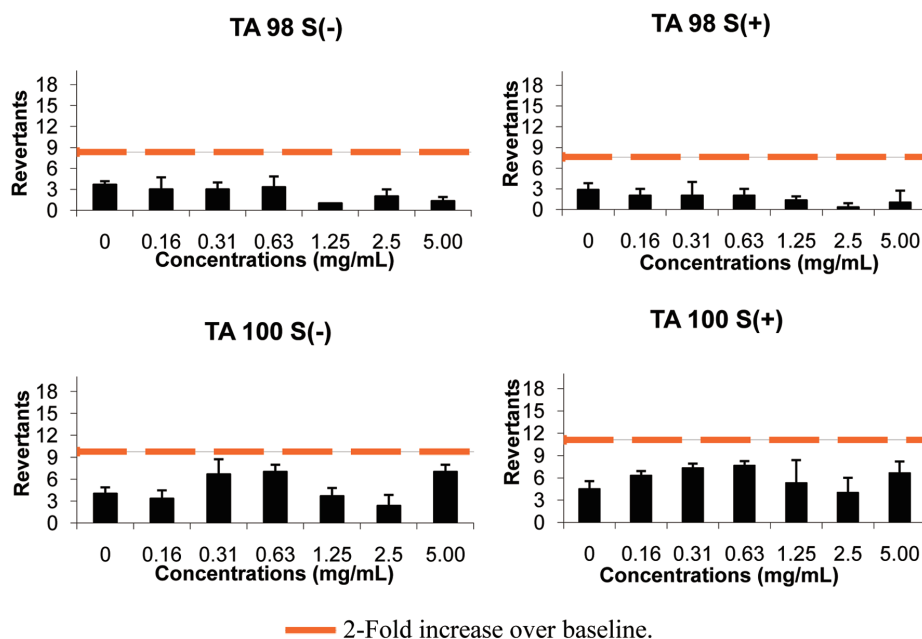


Figure 3. The results of AMES microplate format test of BTPS in TA 98 and TA 100 strains.

#### 4. Conclusions

The *in-vitro* antidiabetic potential of BTPS was evaluated by both  $\alpha$ -glucosidase inhibitory activity and glucose uptake activity. The  $\alpha$ -glucosidase is a key enzyme that plays a crucial role in the digestion of carbohydrates. Its inhibitors can decrease the release of *D*-glucose from carbohydrates and retards intestinal glucose absorption. These actions of  $\alpha$ -glucosidase inhibitors can help reducing plasma glucose levels and the regulation of glucose metabolism. Hence,  $\alpha$ -glucosidase inhibitors are accepted as hypoglycemic agents due to their promising therapeutic potential for treatment of diabetes. The uptake of glucose from blood provides vital energy to cells and maintains the balance of blood glucose level. Therefore, the molecules that have an effect on the mechanism of glucose uptake also serve to establish a normal blood glucose level and prevent T2D. Our results confirmed glucose uptake and  $\alpha$ -glucosidase inhibitory activities of BTPS. Additionally, any toxicological effects that may cause a serious health risk was not recorded for investigated BTPS. Therefore, BTPS should be considered as a potent antidiabetic candidate for developing functional foods and/or dietary supplements. This compound, which has biological activities, should undergo further investigations as a therapeutic ingredient due to its non-genotoxic potential.

#### Acknowledgments

This study is a part of a project funded by TÜBİTAK (under 1003 programme-project no 105O037). We are grateful to ÇAYKUR Tea Enterprise.

#### Conflict of interest

The authors declare that they have no conflicts of interest.

#### References

- Akalın, K., Ekiz, A.T., Karakaya, F., Karadag, A., Pelvan, E., Doğan, K., Alsalvar, C., and Aksu, S. (2019). *In vivo* antidiabetic activities of green and black tea polysaccharides using streptozotocin-induced diabetic mice fed with a high-fat diet. *J. Food Bioact.* 8: 74–83.
- Altıntop, M.D., Atlı, Ö., İlgin, S., Demirel, R., Özdemir, A., and Kaplançıklı, Z.A. (2016). Synthesis and biological evaluation of new naphthalene substituted thiosemicarbazone derivatives as potent antifungal and anticancer agents. *Eur. J. Med. Chem.* 27: 406–414.
- Altıntop, M.D., Özdemir, A., Turan-Zitouni, G., İlgin, S., Atlı, Ö., İşcan, G., and Kaplançıklı, Z.A. (2012). Synthesis and biological evaluation of some hydrazone derivatives as new anticandidal and anticancer agents. *Eur. J. Med. Chem.* 58: 299–307.
- AOAC. (1994). AOAC Official Method 991.43: Total, soluble, and insoluble dietary fiber in foods. Association of Analytical Chemists, Gaithersburg, MD.
- AOAC. (1999). AOAC Official Method 999.10: Lead, cadmium, zinc, copper, and iron in foods. Atomic Absorption Spectrophotometry after Microwave Digestion. Association of Analytical Chemists, Gaithersburg, MD.
- Babu, P.V.A., Sabitha, K.E., and Shyamaladevi, C.S. (2006). Therapeutic effect of green tea extract on oxidative stress in aorta and heart of streptozotocin diabetic rats. *Chem. Biol. Interact.* 162: 114–120.
- Bhattacharya, S., Gachhui, R., and Sil, P.C. (2013). Effect of Kombucha, a fermented black tea in attenuating oxidative stress mediated tissue damage in alloxan induced diabetic rats. *Food Chem. Toxicol.* 60: 328–340.
- Blumenkrantz, N., and Asboe-Hansen, G. (1973). New method for quantitative determination of uronic acids. *Anal. Biochem.* 54: 484–489.
- Cai, W., Xie, L., Chen, Y., and Zhang, H. (2013). Purification, characterization and anticoagulant activity of the polysaccharides from green tea. *Carbohydr. Polym.* 92: 1086–1090.
- Cao, H. (2013). Polysaccharides from Chinese tea: Recent advance on bioactivity and function. *Int. J. Biol. Macromol.* 62: 76–79.
- Cao, H., Hininger-Favier, I., Kelly, M.A., Benaraba, R., Dawson, H.D., Coves, S., Roussel, A.M., and Anderson, R.A. (2007). Green tea polyphenol extract regulates the expression of genes involved in glucose uptake and insulin signaling in rats fed a high fructose diet. *J. Agric. Food Chem.* 55: 6372–6378.
- Chandrasekaran, C.V., Sundarajan, K., Gupta, A., Srikanth, H.S., Edwin, J., and Agarwal, A. (2011). Evaluation of the genotoxic potential of standardized extract of *Glycyrrhiza glabra* (GutGard™). *Regul. Toxicol. Pharmacol.* 61: 373–380.
- Chen, G., Wang, M., Xie, M., Wan, P., Chen, D., Hu, B., Ye, H., Zeng, X., and Liu, Z. (2018). Evaluation of chemical property, cytotoxicity and antioxidant activity *in vitro* and *in vivo* of polysaccharides from Fuzhuan brick teas. *Int. J. Biol. Macromol.* 116: 120–127.
- Chen, H., Qu, Z., Fu, L., Dong, P., and Zhang, X. (2009). Physicochemical properties and antioxidant capacity of 3 polysaccharides from green tea, oolong tea, and black tea. *J. Food Sci.* 74: 469–474.
- Chen, H., Zhang, M., and Xie, B. (2005). Components and antioxidant activity of polysaccharide conjugate from green tea. *Food Chem.* 90: 17–21.
- Cheng, H., Feng, S., Jia, X., Li, Q., Zhou, Y., and Ding, C. (2013). Structural characterization and antioxidant activities of polysaccharides extracted from *Epimedium acuminatum*. *Carbohydr. Polym.* 92: 63–68.
- Dai, J., Wu, Y., Chen, S., Zhu, S., Yin, H., Wang, M., and Tang, J. (2010). Sugar compositional determination of polysaccharides from *Dunaliella salina* by modified RP-HPLC method of precolumn derivatization with 1-phenyl-3-methyl-5-pyrazolone. *Carbohydr. Polym.* 82: 629–635.
- Del Prato, S., Marchetti, P., and Bonadonna, R.C. (2002). Phasic insulin release and metabolic regulation in type 2 diabetes. *Diabetes* 51: 109–116.
- Du, W., Peng, S.M., Liu, A., Shi, L., Tan, L.F., and Zou, X. (2012). Hypoglycemic effect of the water extract of Pu-erh tea. *J. Agric. Food Chem.* 60: 10126–10132.
- DuBois, M., Gilles, K.A., Hamilton, J.K., Rebers, P.A., and Smith, F. (1956). Colorimetric method for determination of sugars and related substances. *Anal. Chem.* 28: 350–356.
- Fan, M., Sun, X., Qian, Y., Xu, Y., Wang, D., and Cao, Y. (2018). Effects of metal ions in tea polysaccharides on their *in vitro* antioxidant activity and hypoglycemic activity. *Int. J. Bio. Macromol.* 113: 418–426.
- Feriani, A., Tir, M., Hamed, M., Sila, A., Nahdi, S., Alwaseel, S., Harrath, A.H., and Tlili, N. (2020). Multidirectional insights on polysaccharides from *Schinus terebinthifolius* and *Schinus molle* fruits: Physicochemical and functional profiles, *in vitro* antioxidant, anti-genotoxicity, antidiabetic, and antihemolytic capacities, and *in vivo* anti-inflammatory and anti-nociceptive properties. *Int. J. Bio. Macromol.* 165: 2576–2587.
- Flückiger-Isler, S., and Kamber, M. (2012). Direct comparison of the Ames microplate format (MPF) test in liquid medium with the standard Ames pre-incubation assay on agar plates by use of equivocal to weakly positive test compounds. *Mutat. Res.* 747: 36–45.
- Gheshlaghi, R., Scharer, J.M., Moo-Young, M., and Douglas, P.L. (2008). Application of statistical design for the optimization of amino acid separation by reverse-phase HPLC. *Anal. Biochem.* 383: 93–102.
- Horszwald, A., and Andlauer, W. (2011). Characterisation of bioactive compounds in berry juices by traditional photometric and modern microplate methods. *J. Berry Res.* 1: 189–199.
- Karadag, A., Dogan, K., Pelvan, E., Tas, A., Eklioglu, O.A., Aksu, S., and Alsalvar, C. (2018).  $\alpha$ -Glucosidase inhibitory activities, functional properties, and safety of green tea polysaccharides as a potential source of dietary supplement. *J. Food Bioact.* 3: 124–132.
- Karadag, A., Pelvan, E., Dogan, K., Celik, N., Ozturk, D., Akalin, K., and Alsalvar, C. (2019). Optimisation of green tea polysaccharides by ultrasound-assisted extraction and their *in vitro* antidiabetic activities. *Qual. Assur. Saf. Crop. Foods.* 11: 479–490.
- Kumar, D., and Rizvi, S.I. (2015). Black tea extract improves anti-oxidant



- profile in experimental diabetic rats. *Arch. Physiol. Biochem.* 121: 109–115.
- Nie, S., and Xie, M.Y. (2011). A review on the isolation and structure of tea polysaccharides and their bioactivities. *Food Hydrocoll.* 25: 144–149.
- Ramadan, G., El-Beih, N.M., and Abd El-Ghffar, E.A. (2009). Modulatory effects of black v. green tea aqueous extract on hyperglycaemia, hyperlipidaemia and liver dysfunction in diabetic and obese rat models. *British J. Nut.* 102: 1611–19.
- Rizvi, S.I., Zaid, M.A., Anis, R., and Mishra, N. (2005). Protective role of tea catechins against oxidation-induced damage of type 2 diabetic erythrocytes. *Clin. Exp. Pharmacol. Physiol.* 32: 70–75.
- Scoparo, C.T., Souza, L.M., Dartora, N., Sasaki, G.L., Santana-Filho, A.P., Werner, M.F.P., Borato, D.G., Baggio, C.H., and Iacomini, M. (2016). Chemical characterization of heteropolysaccharides from green and black teas (*Camellia sinensis*) and their anti-ulcer effect. *Int. J. Biol. Macromol.* 86: 772–781.
- Shori, A.B. (2015). Screening of antidiabetic and antioxidant activities of medicinal plants. *J. Integr. Med.* 13: 297–305.
- Street, R., Drábek, O., Száková, J., and Mládková, L. (2007). Total content and speciation of aluminium in tea leaves and tea infusions. *Food Chem.* 104: 1662–1669.
- Sun, Y., Yang, X., Lu, X., Wang, D., and Zhao, Y. (2013). Protective effects of Keemun black tea polysaccharides on acute carbon tetrachloride-caused oxidative hepatotoxicity in mice. *Food Chem. Toxicol.* 58: 184–192.
- Tsuneki, H., Ishizuka, M., Terasawa, M., Wu, J.B., Sasaoka, T., and Kimura, I. (2004). Effect of green tea on blood glucose levels and serum proteomic patterns in diabetic (db/db) mice and on glucose metabolism in healthy humans. *BMC Pharmacol.* 4: 18.
- Wang, P.C., Zhao, S., Yang, B.Y., Wang, Q.H., and Kuang, H.X. (2016). Antidiabetic polysaccharides from natural sources: A review. *Carbohydr. Polym.* 148: 86–97.
- Wang, S., and Zhu, F. (2016). Antidiabetic dietary materials and animal models. *Food Res. Int.* 85: 315–331.
- Wang, Y., Shao, S., Xu, P., Chen, H., Lin-Shiau, S.Y., Deng, Y.T., and Lin, J.K. (2012). Fermentation process enhanced production and bioactivities of oolong tea polysaccharides. *Food Res. Int.* 46: 158–166.
- Wang, Y., Xian, J., Xi, X., and Wei, X. (2013b). Multi-fingerprint and quality control analysis of tea polysaccharides. *Carbohydr. Polym.* 92: 583–590.
- Wang, Y., Zhao, Y., Andrae-marobela, K., Okatch, H., and Xiao, J. (2013a). Tea polysaccharides as food antioxidants: An old woman's tale? *Food Chem.* 138: 1923–1927.
- Wei, X., Chen, M., Xiao, J., Liu, Y., Yu, L., Zhang, H., and Wang, Y. (2010). Composition and bioactivity of tea flower polysaccharides obtained by different methods. *Carbohydr. Polym.* 79: 418–422.
- Zhang, Z.F., Li, Q., Liang, J., Dai, X.Q., Ding, Y., Wang, J.B., and Li, Y. (2010). Epigallocatechin-3-O-gallate (EGCG) protects the insulin sensitivity in rat L6 muscle cells exposed to dexamethasone condition. *Phytomedicine* 17: 14–18.
- Zhao, Z.Y., Huangfu, L.T., Dong, L.L., and Liu, S.L. (2014). Functional groups and antioxidant activities of polysaccharides from five categories of tea. *Ind. Crops Prod.* 58: 31–35.
- Zhou, X., Wang, D., Sun, P., Bucheli, P., Li, L., Hou, Y., and Wang, J. (2007). Effects of soluble tea polysaccharides on hyperglycemia in alloxan-diabetic mice. *J. Agric. Food Chem.* 55: 5523–5528.